

**CORNER RECORD**

Document Number 07-0531

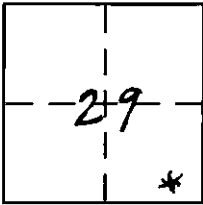
City of MURRIETTA

County of RIVERSIDE, California

Brief Legal Description PCL 2 PM 62/20

SEC. 29 T7S R3W P90.

APN: 909-140-018



**CORNER TYPE**

Government Corner  Control   
Meander  Property   
Rancho  Other   
Date of Survey 3/29/2007

**COORDINATES (Optional)**

N. \_\_\_\_\_  
E. N/A  
Zone \_\_\_\_\_ NAD27  NAD83   
NAD83 Epoch N/A  
Elev. \_\_\_\_\_  
Vert. Datum: NGVD29  NAVD88   
Meas. Units: Metric  Imperial

Corner - Left as found  Found and tagged  Established  Reestablished  Rebuilt

Identification and type of corner found: Evidence used to identify or procedure used to establish or reestablish the corner:

SEE PAGE 2 OF 2 (OTHER SIDE)

A description of the physical condition of the monument as found and as set or reset:

SEE PAGE 2 OF 2 (OTHER SIDE)

**SURVEYOR'S STATEMENT**

This Corner Record was prepared by me or under my direction in conformance with the Land Surveyor's Act on 4/2 2007

Signed Mark W. Christensen P.L.S. or P.D.E. No. 5266



**COUNTY SURVEYOR'S STATEMENT**

This Corner Record was received April 6, 2007

and examined and filed August 13, 2007

Signed Brian H. Hess P.L.S. or P.D.E. No. 4993

Title County Surveyor

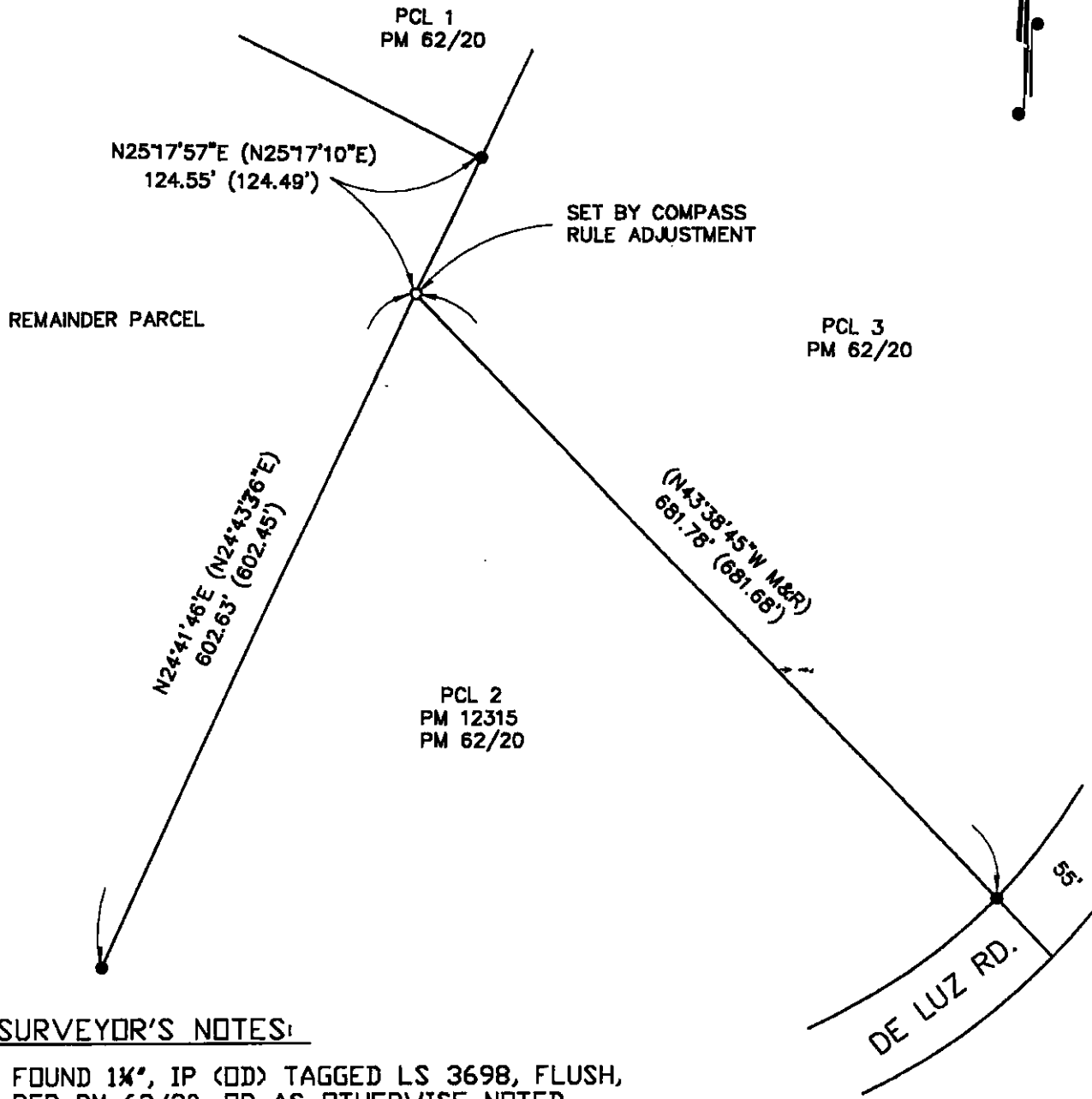


County Surveyor's Comment \_\_\_\_\_

GRAPHIC SCALE



( IN FEET )  
1 inch = 100 ft.



SURVEYOR'S NOTES:

- FOUND 1X", IP (OD) TAGGED LS 3698, FLUSH, PER PM 62/20, OR AS OTHERWISE NOTED.
- SET 1X", IP (OD), FLUSH, TAGGED PLS 5266.
- (--> RECORD DATA PER PM 62/20
- M&R MEASURED AND RECORD DATA PER PM 62/20.