

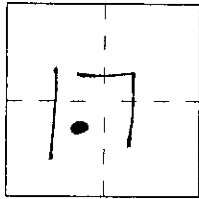
# CORNER RECORD

Document Number 06-0422

City of Murrieta County of Riverside, California

Brief Legal Description Jefferson Avenue & Juniper Street SEC. 17, T 7S, R 3W

TEMECULA RANCHO  
COORDINATES (Optional)



### CORNER TYPE

- Government Corner  Control   
 Meander  Property   
 Rancho  Other

Date of Survey 9/27/05

N. \_\_\_\_\_  
 E. \_\_\_\_\_  
 Zone \_\_\_\_\_ NAD27  NAD83   
 NAD83 Epoch \_\_\_\_\_  
 Elev. \_\_\_\_\_  
 Vert. Datum: NGVD29  NAVD88   
 Meas. Units: Metric  Imperial   
 U.S. Survey foot

Corner — Left as found  Found and tagged  Established  Reestablished  Rebuilt

Identification and type of corner found; Evidence used to identify or procedure used to establish or reestablish the corner:

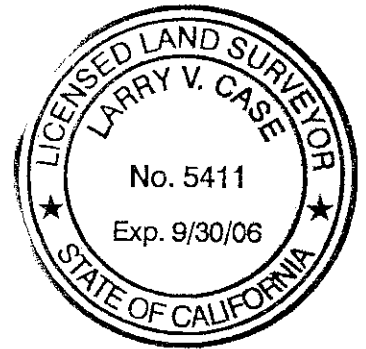
Found as described on the reverse of this sheet.

A description of the physical condition of the monument as found and as set or reset: \_\_\_\_\_  
 These ties are for the purpose of perpetuating the found monumentation. No claim is made as to the  
relationship of the points or lines shown hereon to true boundary location.

### SURVEYOR'S STATEMENT

This Corner Record was prepared by me or under my direction in conformance with the Land Surveyor's Act on April 17, 2006

Signed [Signature] L.S. or R.C.E. No. L.S. 5411



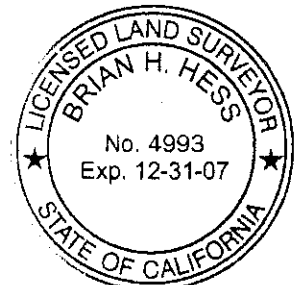
### COUNTY SURVEYOR'S STATEMENT

This Corner Record was received MAY 2, 2006

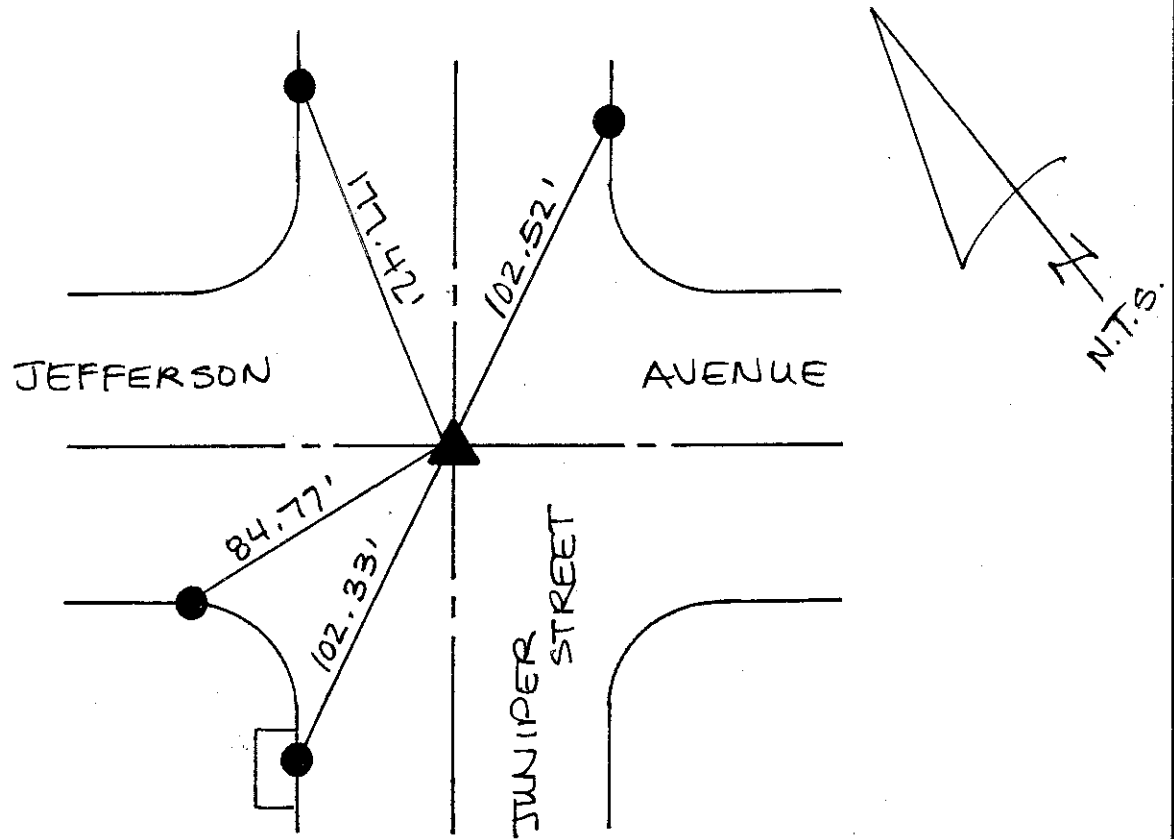
and examined and filed MAY 19, 2006

Signed [Signature] L.S. or ~~R.C.E.~~ No. 4993

Title COUNTY SURVEYOR



County Surveyor's Comment \_\_\_\_\_



- ▲ FD. WELL MON. W/PUN. BRASS DISK (NO REF.) BEFORE & AFTER CONSTR. (12/05)
- SET L/T W/TAG L.S. 5411 IN TOP OF CURB.

The purpose of this record is to document the perpetuation of found monument(s) pursuant to the PLS Act Section 8771. No claim is made regarding the correctness of the position(s) of said monument(s), nor the dimensional relationship to street centerlines or property boundaries.

04-GRI-999