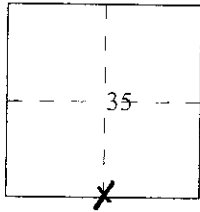


# CORNER RECORD

Document Number 06-0416

City of MURRIETA County of RIVERSIDE, California

Brief Legal Description S 1/4 CORNER, SECTION 35, T. 6 S., R. 3 W., S.B.M.



### CORNER TYPE

- Government Corner  Control
- Meander  Property
- Rancho  Other

Date of Survey APRIL 7, 2006

### COORDINATES (Optional)

N. \_\_\_\_\_  
 E. \_\_\_\_\_  
 Zone \_\_\_\_\_ NAD27  NAD83   
 NAD83 Epoch \_\_\_\_\_  
 Elev. \_\_\_\_\_  
 Vert. Datum: NGVD29  NAVD88   
 Meas. Units: Metric  Imperial   
 U.S. Survey foot

Corner — Left as found  Found and tagged  Established  Reestablished  Rebuilt

Identification and type of corner found; Evidence used to identify or procedure used to establish or reestablish the corner:  
SEE PAGE 2.

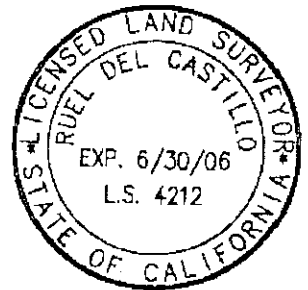
A description of the physical condition of the monument as found and as set or reset: SEE PAGE 2.

### SURVEYOR'S STATEMENT

This Corner Record was prepared by me or under my direction in conformance with the Land Surveyor's Act on APRIL 18, 2006

Signed Ruel del Castillo L.S. or R.C.E. No. 4212

EXP. 6/30/06



### COUNTY SURVEYOR'S STATEMENT

This Corner Record was received APRIL 26, 2006

and examined and filed MAY 19, 2006

Signed B. Hess L.S. or ~~R.C.E.~~ No. 4993

Title COUNTY SURVEYOR

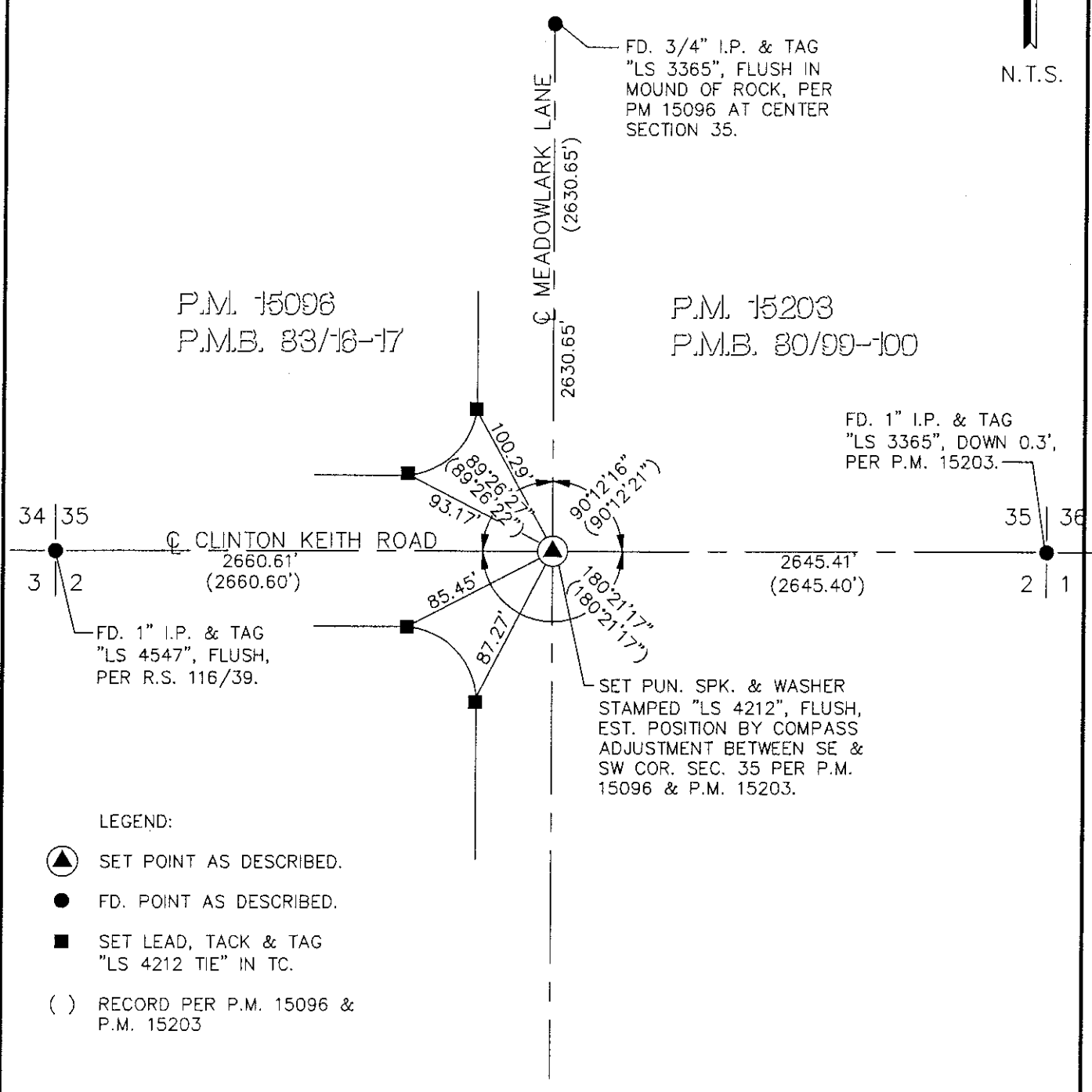
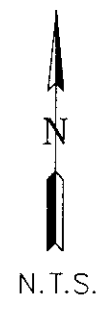


County Surveyor's Comment \_\_\_\_\_

**THE FILING OF THIS CORNER RECORD  
 DOES NOT RELIEVE THE SURVEYOR  
 FROM ANY RESPONSIBILITY OF THE  
 FILING OF A RECORD OF SURVEY**

# S 1/4 COR SEC. 35

T. 6 S., R. 3 W., S.B.M.



- LEGEND:
- ▲ SET POINT AS DESCRIBED.
  - FD. POINT AS DESCRIBED.
  - SET LEAD, TACK & TAG "LS 4212 TIE" IN TC.
  - ( ) RECORD PER P.M. 15096 & P.M. 15203

T. 6 S., R. 3 W., S.B.M.