

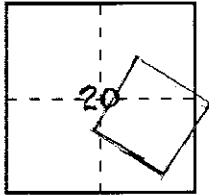
CORNER RECORD

Document Number 06-0259

City of MURRIETA County of RIVERSIDE, California

Brief Legal Description RANCHO LA LAGUNA SECTION 20, 21 T. 7S. R 3W

APN: _____



CORNER TYPE

Government Corner Control
Meander Property
Rancho Other
Date of Survey 11-6-2000

COORDINATES (Optional)

N. _____
E. _____
Zone _____ NAD27 NAD83
NAD83 EPOCH _____
Elev. _____
Vert. Datum: NGVD 29 NAVD88
Meas. Units Metric Imperial

(Include: Sec., Twp., Rge. & Meridian or Rancho)

Corner — Left as found Found and tagged Established Reestablished Rebuilt

Identification and type of corner found: Evidence used to identify or procedure used to establish the corner:

SEE PLAT ON REVERSE PAGE 2 OF 2

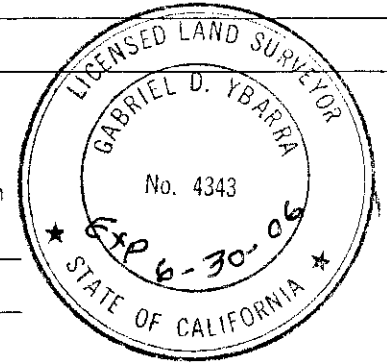
A description of the physical condition of the monument as found and as set or reset:

SEE PLAT ON REVERSE PAGE 2 OF 2

SURVEYOR'S STATEMENT

This Corner Record was prepared by me or under my direction in conformance with the Land Surveyors' Act on April 3, 2006

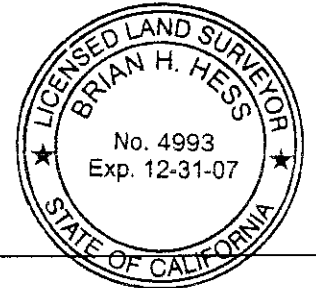
Signed [Signature] L.S. or R.C.E. Number 4343



COUNTY SURVEYOR'S STATEMENT

This Corner Record was received 4-4-2006 and examined and filed 5-8-2006

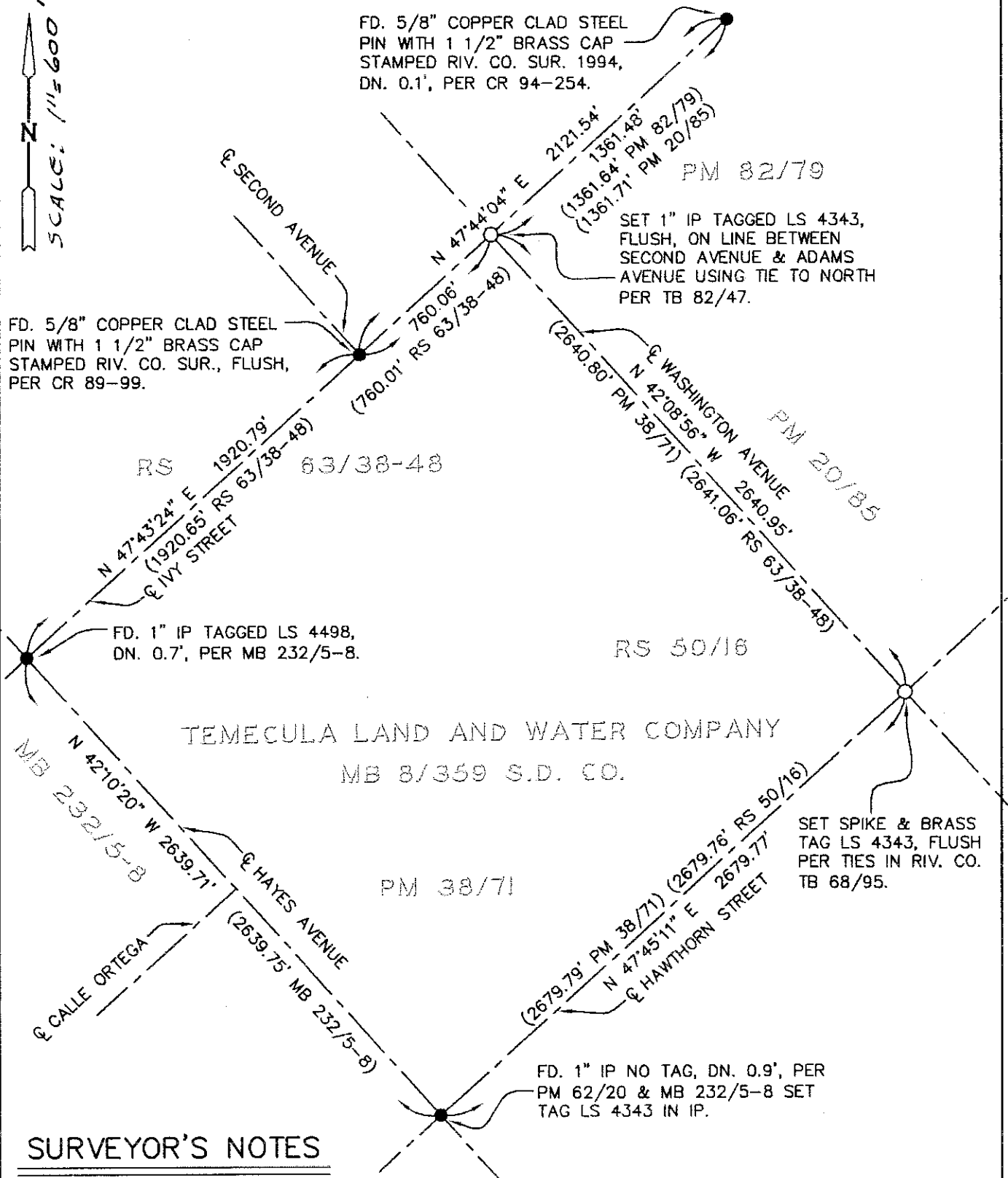
Signed [Signature] County Surveyor



County Surveyor's Comment _____

THE FILING OF THIS CORNER RECORD DOES NOT RELIEVE THE SURVEYOR FROM ANY RESPONSIBILITY OF THE FILING OF A RECORD OF SURVEY

SCALE: 1"=600'



SURVEYOR'S NOTES

Basis of Bearings is taken from the centerline of Hayes Avenue, as shown by M.B. 232/5-8, being N 42°10'20" W.

- Denotes found monument as noted.
- Denotes set monuments as noted.
- () Denotes record data per M.B. 12/42-51.

All I.P. dimensions are inside diameter.