

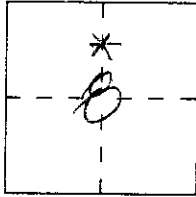
CORNER RECORD

Document Number 06-182

City of MURRIETA

County of RIVERSIDE, California

Brief Legal Description PORTION OF TEMECULA RANCHO, SEC. 8 T. 7 S., R. 3 W., S. B. M.
(Include: Sec., Twp., Rge., and Meridian or Rancho) (PROJECTED)



CORNER TYPE

Government Corner Control
Meander Property
Rancho Other
Date of Survey MARCH 6, 2002

COORDINATES
(Optional)

~~N. _____~~
~~E. _____~~
~~Zone _____ Datum _____~~
~~Elev. _____~~

Corner — Left as found Found and tagged Established Reestablished Rebuilt

Identification and type of corner found: Evidence used to identify or procedure used to establish or reestablish the corner:

(SEE OPPOSITE SIDE)

A description of the physical condition of the monument as found and as set or reset:

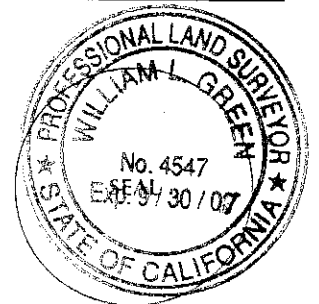
(SEE OPPOSITE SIDE)

SURVEYOR'S STATEMENT

This Corner Record was prepared by me or under my direction in conformance with

the Land Surveyors Act of APRIL 1 2002

Signed [Signature] L.S. or R.C.E. Number 4547



COUNTY SURVEYOR'S STATEMENT

This Corner Record was received 3-22 2006 and examined

and filed APRIL 4 2006

Signed [Signature] Title COUNTY SURVEYOR



County Surveyor's Comment _____

THE FILING OF THIS CORNER RECORD
DOES NOT RELIEVE THE SURVEYOR
FROM ANY RESPONSIBILITY OF THE
FILING OF A RECORD OF SURVEY

SHEET 3 OF 5

SEE SHEET 4

JACKSON

LOT 1
TR 21514
M.B. 171/86-91

FOUND
RAM-SET
NAIL

VIA DIAMANTE

LOT 114
TR 21514
M.B. 171/86-91

FOUND
RAM-
SET
NAIL

FOUND 1" I.P. W/ PLASTIC
PLUS RCE 2050B.
(3-19-02)
FOUND 1" I.P. W/ CONC.
& PIN. TAG MISSING.
FLUSH. (3-7-06)

AVENUE

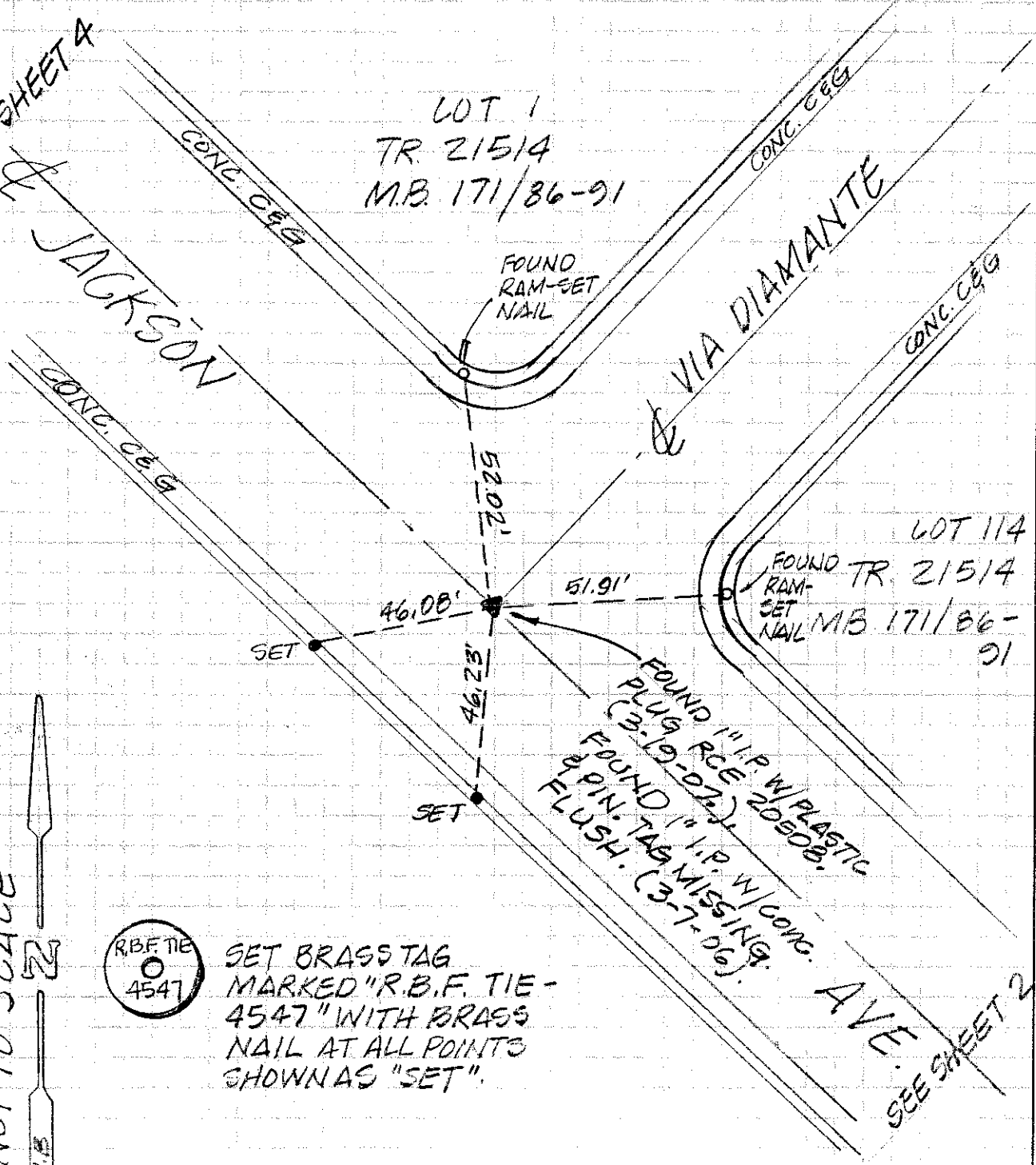
SEE SHEET 2



NOT TO SCALE



SET BRASS TAG
MARKED "R.B.F. TIE -
4547" WITH BRASS
NAIL AT ALL POINTS
SHOWN AS "SET".



R.B.F. J.N. 15-100500