

CORNER RECORD

Document Number 06-0168

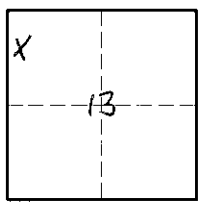
City of MURRIETA

County of RIVERSIDE, California

Brief Legal Description LOT 360, M.B. 71/1-12 SEC 13, T. 7S, R. 3W, S.B.M.

(Include: Sec., Twp., Rge., and Meridian or Rancho)

A.P.N. 956-211-004



CORNER TYPE

COORDINATES (Optional)

- Government Corner
- Meander
- Rancho
- Date of Survey _____
- Control
- Property
- Other

N. _____
 E. _____
 Zone _____ NAD27 NAD83
 NAD83 EPOCH _____
 Elev. _____
 Vert. Datum: NGVD29 NAVD88
 Meas. Units: Metric Imperial

Corner — Left as found Found and tagged Established Reestablished Rebuilt

Identification and type of corner found: Evidence used to identify or procedure used to establish the corner:

SEE PAGE 2

A description of the physical condition of the monument as found and as set or reset: _____

SEE PAGE 2

SURVEYOR'S STATEMENT

This Corner Record was prepared by me or under my direction in conformance with the Land Surveyors' Act on NOV. 23, 2005.

Signed [Signature] L.S. or R.C.E. Number 6153



COUNTY SURVEYOR'S STATEMENT

This Corner Record was received 1/3 2006 and examined and filed 2/21 2006.

Signed [Signature] Title SUPERVISING LAND SURVEYOR

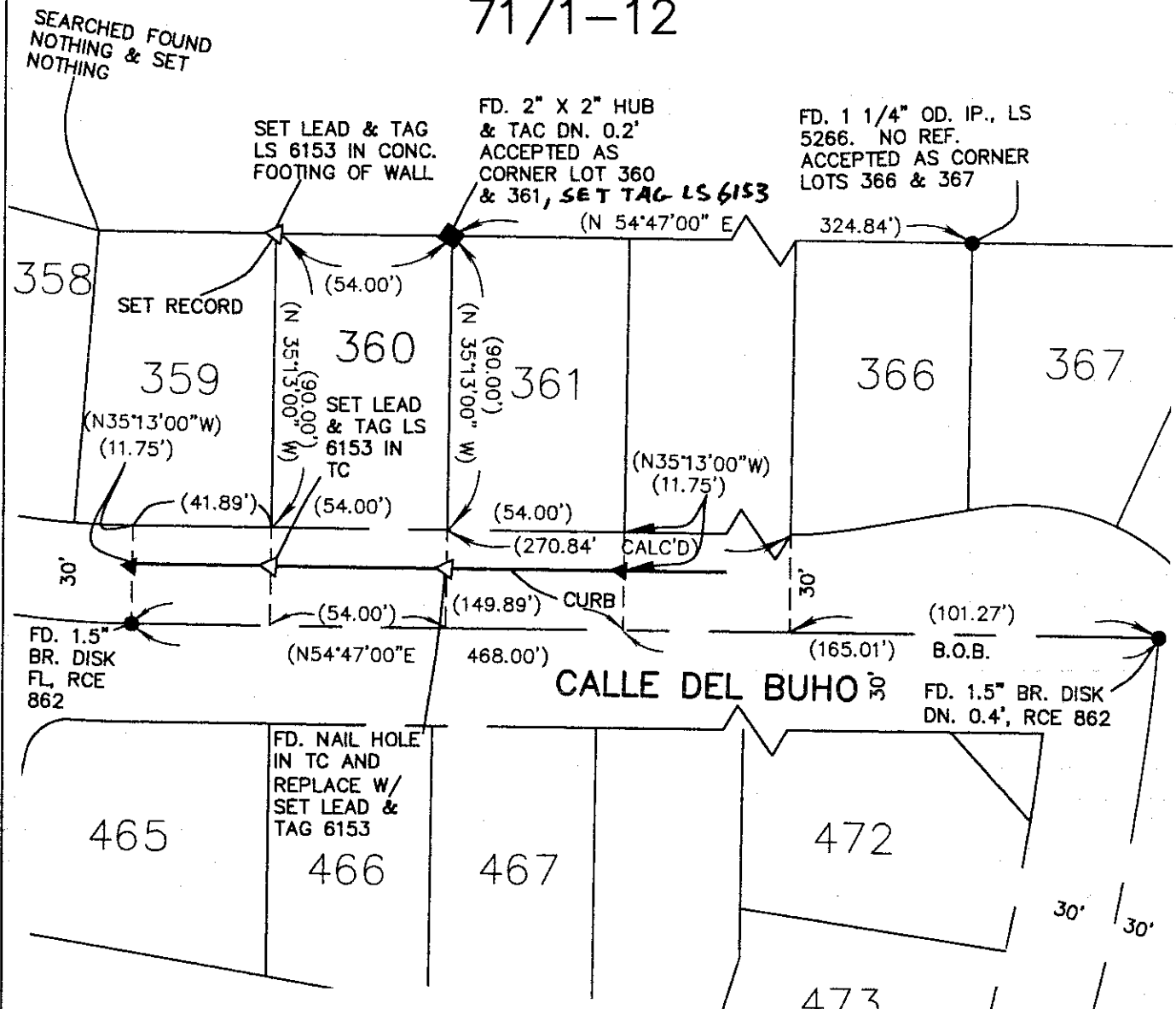


County Surveyor's Comment _____

THE FILING OF THIS CORNER RECORD DOES NOT RELIEVE THE SURVEYOR FROM ANY RESPONSIBILITY OF THE FILING OF A RECORD OF SURVEY

SURVEY TO REESTABLISH CORNERS FOR LOT 360, TRACT NO. 4259, M.B.

71/1-12

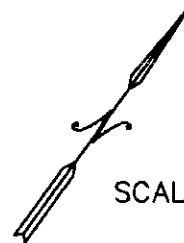


SURVEYOR'S NOTES:

BASIS OF BEARINGS: BEARINGS HEREON ARE BASED ON THE CENTER LINE OF CALLE DEL BUHO PER M.B. 71/1-12 BEING N.54°47'00"E.

(-) INDICATES, RECORD & MEASURED DATA PER M.B. 71/1-12

- ▲ INDICATES, FOUND NAIL IN TC
- INDICATES, FOUND MONUMENT AS NOTED PER M.B. 71/1-12
- FOUND AS NOTED



SCALE 1" = 50'

04171.102