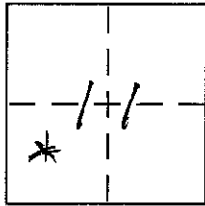


CORNER RECORD

Document Number 05-895
City of MURRIETA County of RIVERSIDE, California

Brief Legal Description LOT 15 MB 158/7-19 SEC. 11, T75R4W, PR05
APN: 904-130-015



CORNER TYPE

Government Corner Control
Meander Property
Rancho Other
Date of Survey 8-30-05

COORDINATES (Optional)

N. N/A
E. N/A
Zone NAD27 NAD83
NAD83 Epoch N/A
Elev. _____
Vert. Datum: NGVD29 NAVD88
Meas. Units: Metric Imperial

Corner - Left as found Found and tagged Established Reestablished Rebuilt

Identification and type of corner found: Evidence used to identify or procedure used to establish or reestablish the corner:

SEE PAGE 2 OF 2 (OTHER SIDE)

A description of the physical condition of the monument as found and as set or reset:

SEE PAGE 2 OF 2 (OTHER SIDE)

SURVEYOR'S STATEMENT

This Corner Record was prepared by me or under my direction in conformance with the Land Surveyor's Act on 10/14 2005

Signed Maria W. Christensen P.L.S. or R.C.E. No. 5266



COUNTY SURVEYOR'S STATEMENT

This Corner Record was received 11-21-2005

and examined and filed 12-20-2005

Signed Brian H. Hess P.L.S. or R.C.E. No. 4993

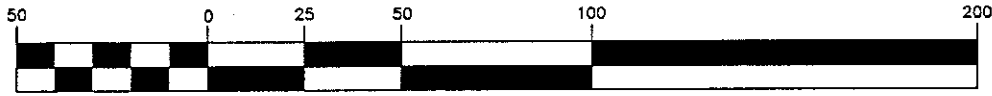
Title COUNTY SURVEYOR



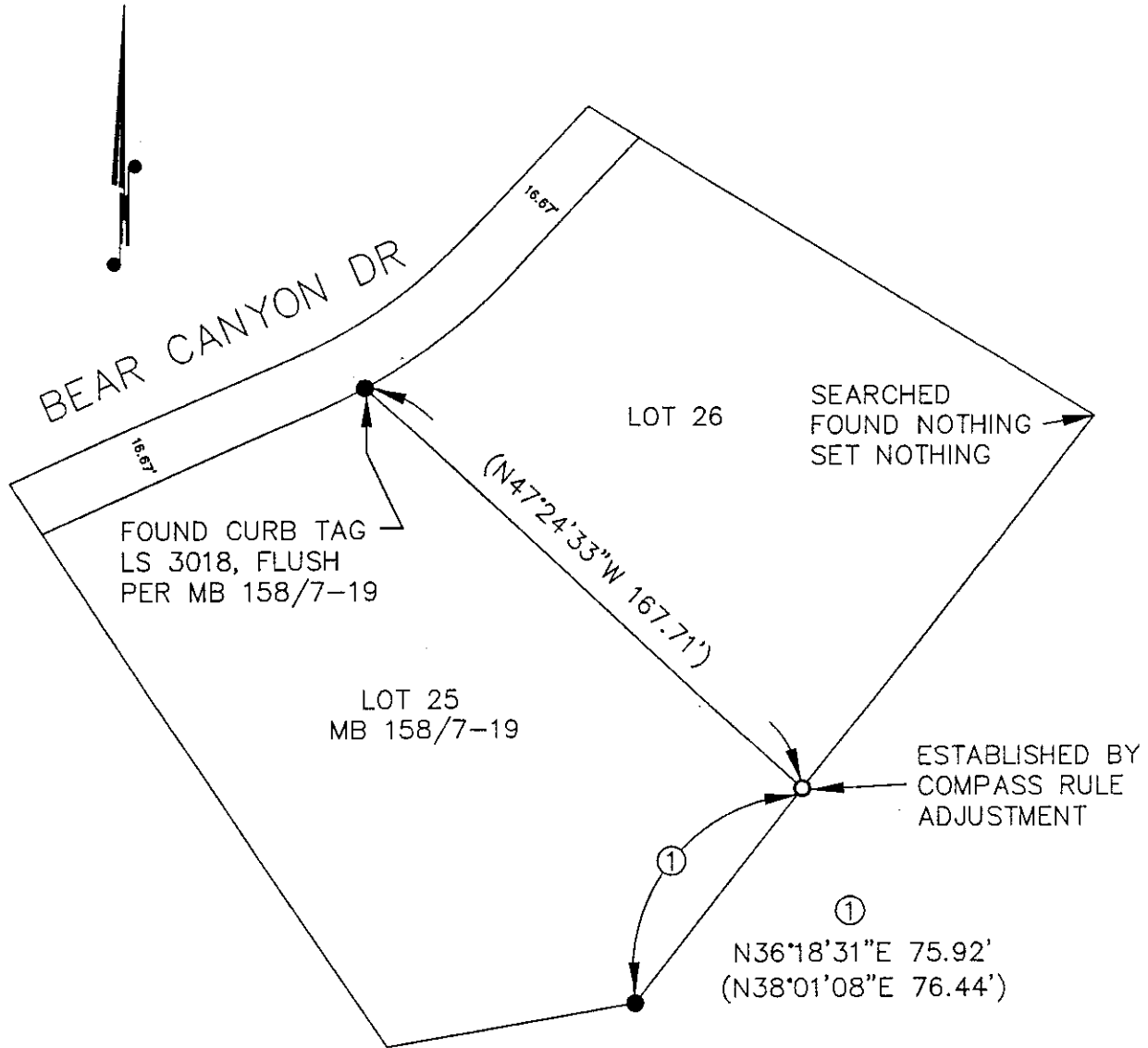
County Surveyor's Comment _____

**THE FILING OF THIS CORNER RECORD
DOES NOT RELIEVE THE SURVEYOR
FROM ANY RESPONSIBILITY OF THE
FILING OF A RECORD OF SURVEY**

GRAPHIC SCALE



(IN FEET)
1 inch = 50 ft.



SURVEYOR'S NOTES:

- FOUND 1¼" IP(OD), FLUSH, TAGGED LS 3018 PER MB 158/7-19, UNLESS OTHERWISE NOTED
- SET 1¼" IP(OD), FLUSH, TAGGED PLS 5266.
- (--) RECORD DATA PER MB 158/7-19