

**CORNER RECORD**

Document Number 05 881

City of MURRIETA

County of RIVERSIDE, California

Brief Legal Description A PORTION OF MURRIETA PORTION TEMECULA RANCHO - SECTION 2, T7S, R3W, 3E.M.  
(Include: Sec., Twp., Rge., and Meridian or Rancho)

A.P.N. N/A



**CORNER TYPE**

**COORDINATES (Optional)**

Government Corner  Control   
Meander  Property   
Rancho  Other   
Date of Survey NOVEMBER 07, 2005

N. \_\_\_\_\_  
E. \_\_\_\_\_  
Zone \_\_\_\_\_ NAD27  NAD83   
NAD83 EPOCH \_\_\_\_\_  
Elev. \_\_\_\_\_  
Vert. Datum: NGVD29  NAVD88   
Meas. Units: Metric  Imperial

Corner — Left as found  Found and tagged  Established  Reestablished  Rebuilt

Identification and type of corner found: Evidence used to identify or procedure used to establish the corner:

FOUND 1 1/4" O.D. IRON PIPE, DN. O.2' W/ L.S. 3698 TIG.  
PRIOR TO CONSTRUCTION. SET TIES AS SHOWN ON 5.

A description of the physical condition of the monument as found and as set or reset: \_\_\_\_\_

SEE SHEET 2 OF 2.

**SURVEYOR'S STATEMENT**

This Corner Record was prepared by me or under my direction in conformance with the Land Surveyors' Act on NOVEMBER 08 2005.

Signed [Signature] L.S. or R.C.E. Number 4741



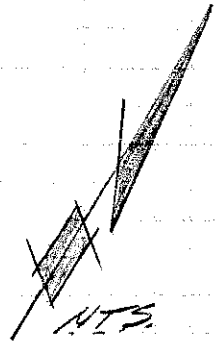
**COUNTY SURVEYOR'S STATEMENT**

This Corner Record was received NOVEMBER 8 2005 and examined and filed DECEMBER 5 2005

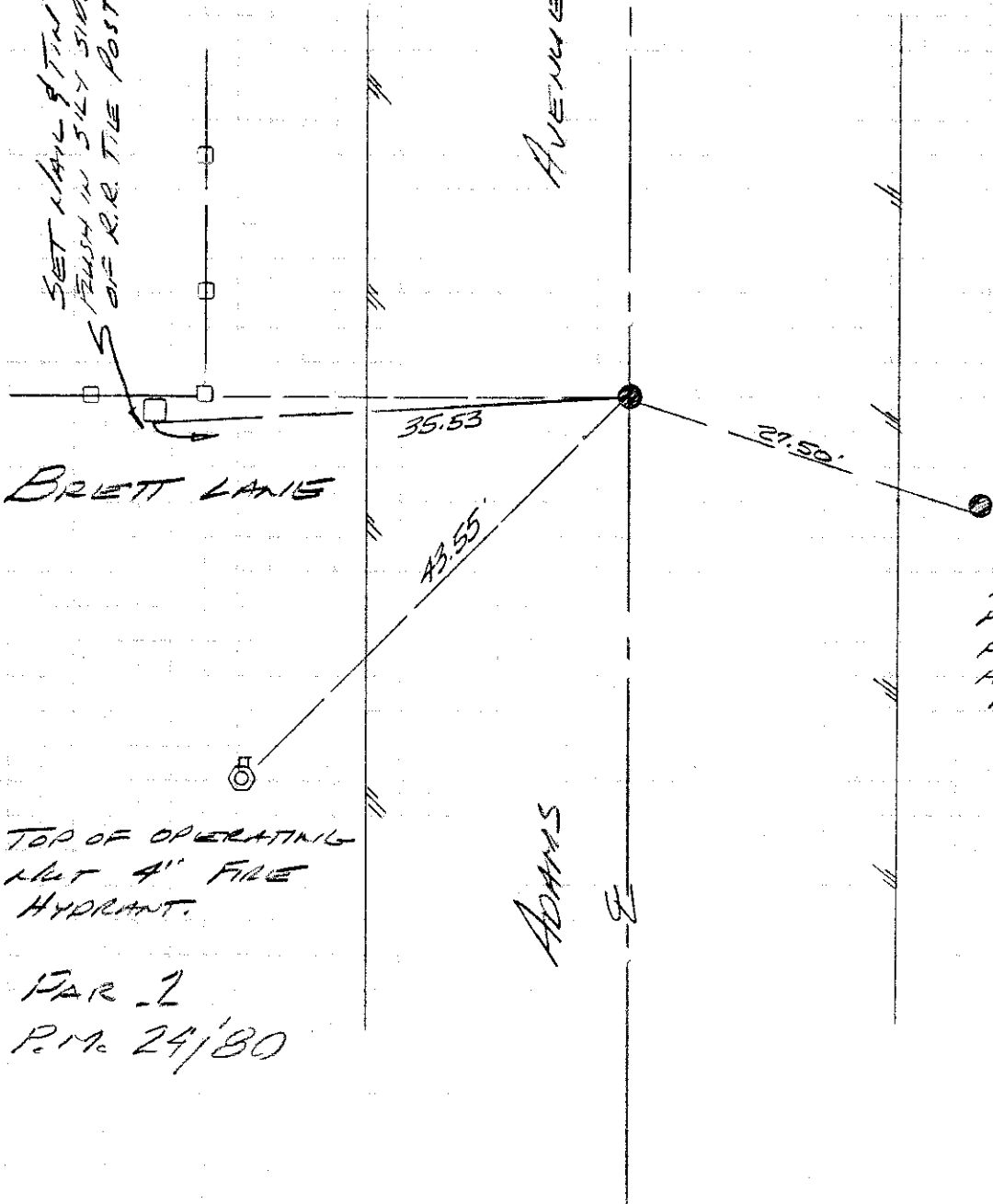
Signed [Signature] Title COUNTY SURVEYOR



County Surveyor's Comment \_\_\_\_\_



SET NAIL & TIN  
FLASH IN SILEY SIDE  
S OF R.R. TIE POST.



BRETT LANE

ADAMS AVENUE

ADAMS AVENUE

TOP OF OPERATING  
MET 4" FIRE  
HYDRANT.

P.A.R. 2  
P.M. 24/80

FO NAIL & TIN  
IN SILEY SIDE  
P.P. # 75432 -  
P.P. REMOVED  
AFTER MON.  
WAS SET.