

**CORNER RECORD**

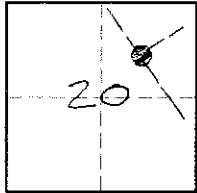
Document Number 05872

City of MURRIETA

County of RIVERSIDE, California

Brief Legal Description PORTION OF TEMECULA RANCHO, LYING IN SECTION 20, T. 15., R. 3 W., S. 8. N.  
(Include: Sec., Twp., Rge., and Meridian or Rancho)

A.P.N. N/A



**CORNER TYPE**

**COORDINATES**  
(Optional)

Government Corner  Control   
Meander  Property   
Rancho  Other   
Date of Survey OCTOBER 26, 2005

N. \_\_\_\_\_  
E. \_\_\_\_\_  
Zone \_\_\_\_\_ NAD27  NAD83   
NAD83 EPOCH \_\_\_\_\_  
Elev. \_\_\_\_\_  
Vert. Datum: NGVD29  NAVD88   
Meas. Units: Metric  Imperial

Corner — Left as found  Found and tagged  Established  Reestablished  Rebuilt

Identification and type of corner found: Evidence used to identify or procedure used to establish the corner:

FOUND 1 1/4" O.D. IRON PIPE, DIA. 0.2' W/ MARK # "LS 3693"  
TAB PRIOR TO CONSTRUCTION - SET TIES AS SHOWN ON  
SHEET 2 OF 2. (P.M. 29/71)

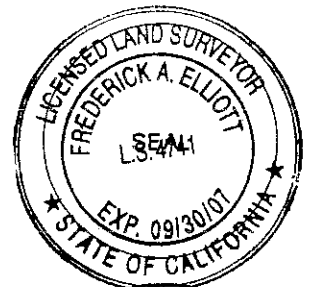
A description of the physical condition of the monument as found and as set or reset:

SEE SHEET 2 OF 2.

**SURVEYOR'S STATEMENT**

This Corner Record was prepared by me or under my direction in conformance with the Land Surveyors' Act on OCTOBER 26 2005.

Signed Fred A. Elliott L.S. or ~~REG.~~ Number 4741



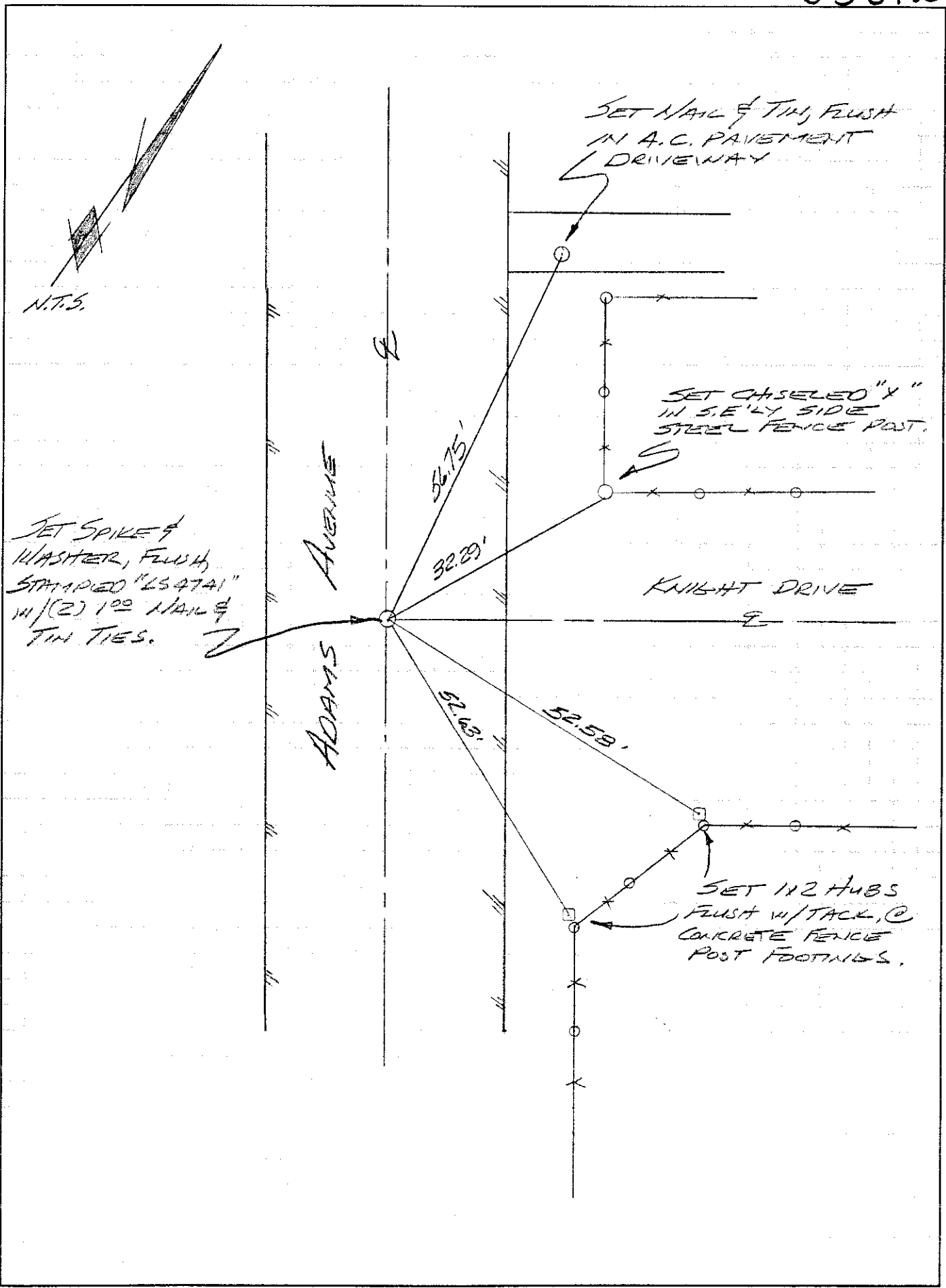
**COUNTY SURVEYOR'S STATEMENT**

This Corner Record was received OCT. 27 2005 and examined and filed NOV. 28 2005.

Signed Brian H. Hess Title COUNTY SURVEYOR



County Surveyor's Comment \_\_\_\_\_



N.T.S.

SET NAIL & TIN, FLUSH IN A.C. PAVEMENT DRIVEWAY

SET CHASELED "X" IN S.E. LY SIDE STEEL FENCE POST.

SET SPIKE & WASHER, FLUSH STAMPED "LS4741" W/ (2) 100 NAIL & TIN TIES.

KNIGHT DRIVE

SET 1/2 HUBS FLUSH W/ TACK, @ CONCRETE FENCE POST FOOTINGS.

ADAMS AVENUE